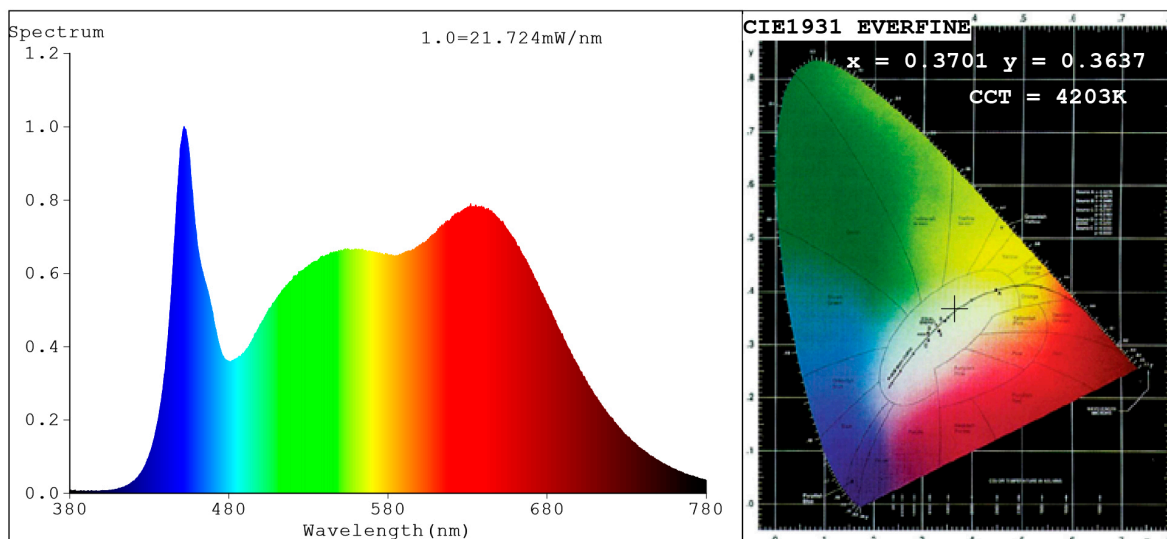


Spectrum Test Report



Color Parameters:

Chromaticity Coordinate: $x=0.3701$ $y=0.3637$ $u'=0.2235$ $v'=0.4941$
 CCT=4203K (Duv=-0.0031) Dominant WL: $\lambda_d = 580.5\text{nm}$ Purity=20.2%
 Ratio: R=20.1% G=75.2% B=4.7%; Peak WL: $\lambda_p = 451.9\text{nm}$ FWHM=26.3nm
 Render Index: Ra=97.6 CRI=95.4 TM30: Rf=93 Rg=103 Lav=583.5nm
 R1 =98 R2 =99 R3 =95 R4 =99 R5 =98 R6 =95 R7 =100
 R8 =97 R9 =93 R10=96 R11=97 R12=75 R13=99 R14=96 R15=96

Photo Parameters:

Flux = 1010 lm Eff. : 97.07 lm/W Fe = 3.793 W Scotopic: 1920.6 S/P: 1.9009

Electrical parameters:

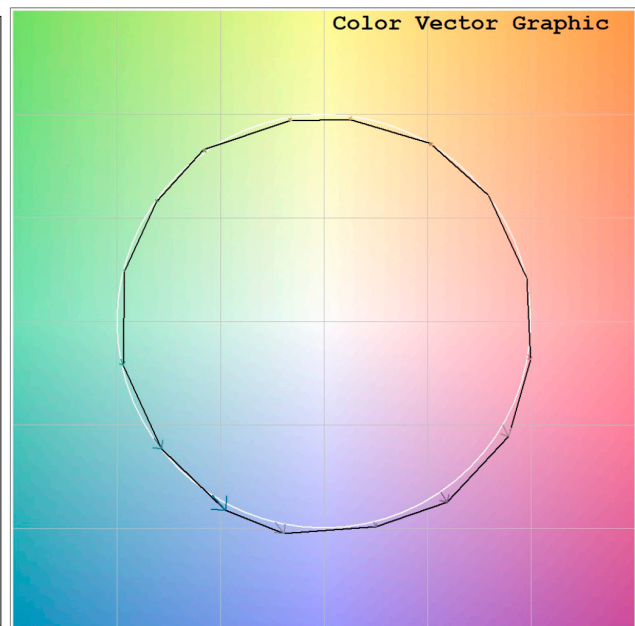
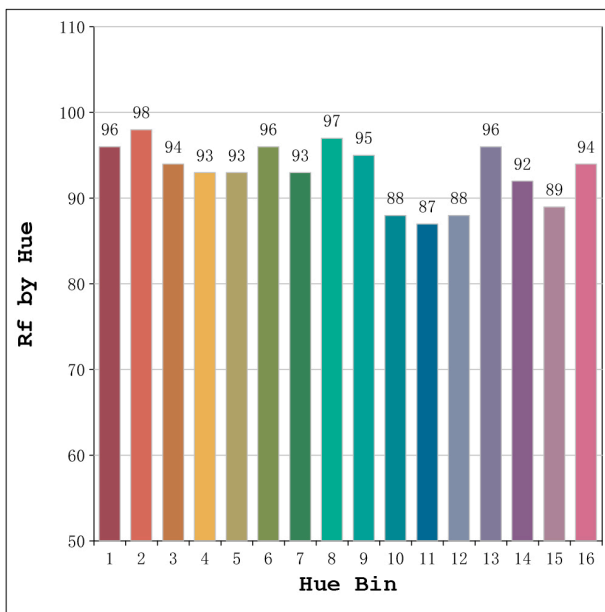
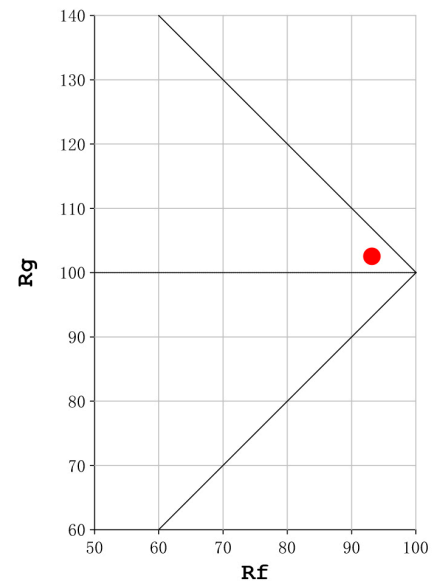
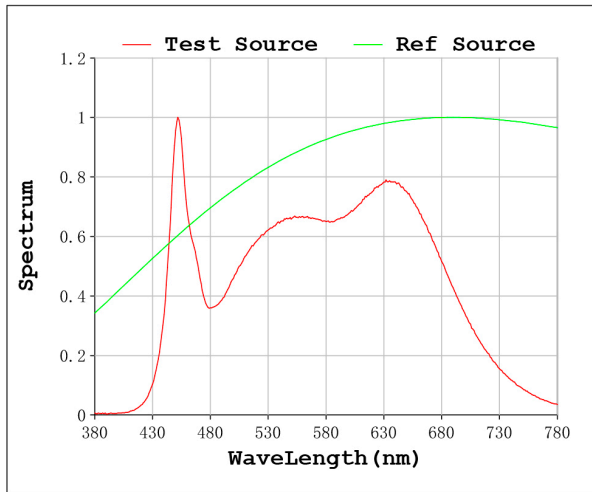
V = 11.998 V I = 0.8675 A P = 10.41 W PF = 1.000

Status: Integral T = 500 ms Ip = 15997 (24%)

Model: Ecoled Ávila pro neutro
 Tester: Sergio Carneros
 Temperature: 25Deg
 Manufacturer: Luz Negra.S.L

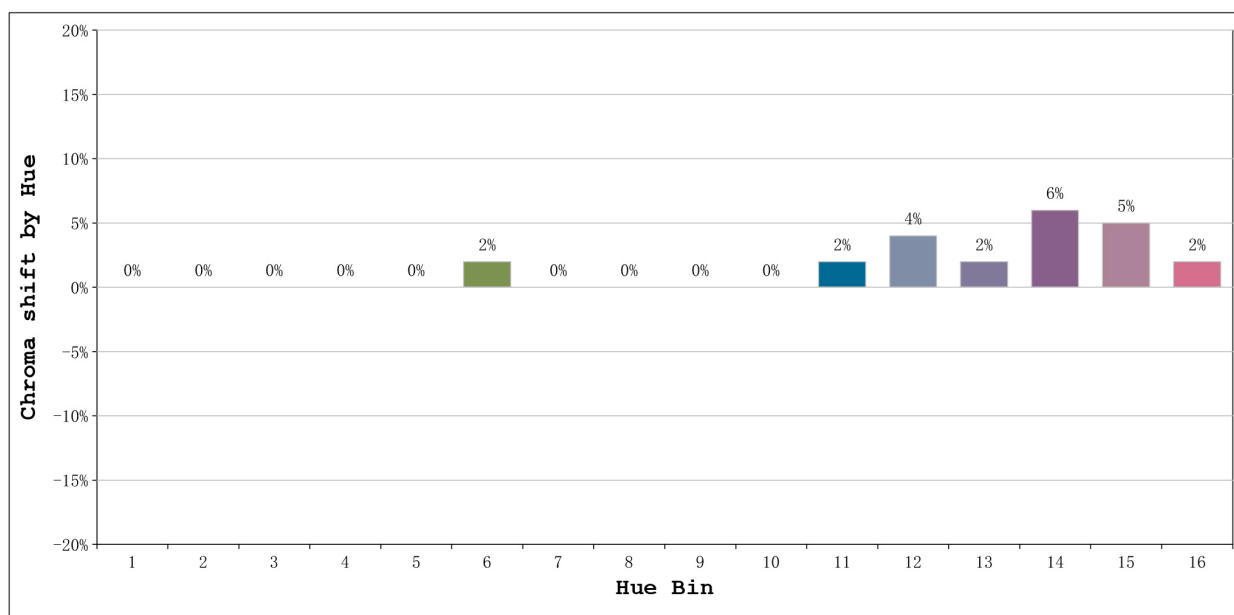
Number: 32.076
 Date: 26-5-2021
 Humidity: 57%
 Remarks: 100cm Tira flexible

Rf: 93 **CCT: 4203 K** **u': 0.2235**
Rg: 103 **Duv: -0.0031** **v': 0.4941**



Model:Ecoled Ávila pro neutro
 Tester:Sergio Carneros
 Temperature:25Deg
 Manufacturer:Luz Negra.S.L

Number: 32.076
 Date:26-5-2021
 Humidity:57%
 Remarks:100cm Tira flexible



			Graphic shift(%)	
Hue Bin	Hue Angle	Rf	Chroma	Hue
1	0.0° - 22.5°	96	0	0
2	22.5° - 45.0°	98	0	0
3	45.0° - 67.5°	94	0	2
4	67.5° - 90.0°	93	0	1
5	90.0° - 112.5°	93	0	1
6	112.5° - 135.0°	96	2	1
7	135.0° - 157.5°	93	0	1
8	157.5° - 180.0°	97	0	0
9	180.0° - 202.5°	95	0	3
10	202.5° - 225.0°	88	0	6
11	225.0° - 247.5°	87	2	9
12	247.5° - 270.0°	88	4	5
13	270.0° - 292.5°	96	2	1
14	292.5° - 315.0°	92	6	0
15	315.0° - 337.5°	89	5	-2
16	337.5° - 360.0°	94	2	-1

Model:Ecoled Ávila pro neutro
 Tester:Sergio Carneros
 Temperature:25Deg
 Manufacturer:Luz Negra.S.L

Number: 32.076
 Date:26-5-2021
 Humidity:57%
 Remarks:100cm Tira flexible